

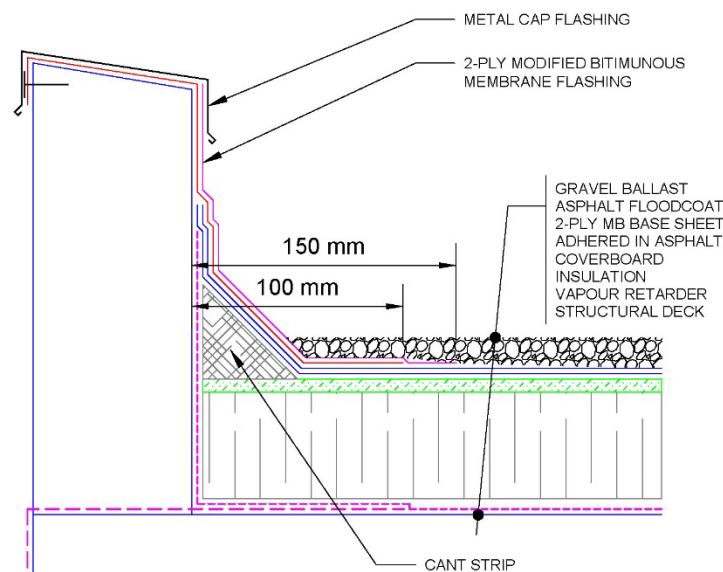
February 15, 2023

# Technical Bulletin TB-2023-01

## I. Modified BUR membrane standard revision

On January 26, 2023 ARCA Warranty Ltd. approved a revision to the ARCA Roofing Application Standards when using Modified Bituminous Membranes in a Modified Built-Up roofing assembly. Bitumen adhered sheets shall continue to be turned up the vertical substrate a minimum of 75mm (3") and adhered with a mopping of hot bitumen at the perimeter of each self-contained roof section (BUR 6.3.3.8) but are no longer required to be anchored to the vertical substrate when bitumen adhered.

ARCA Roofing Standards BUR 6.3.3.9 (a), (b), and (c) have been removed.



Modified BUR Membrane Flashing Detail

These changes will be in effect for jobs bid after March 26, 2023. Changes will be referenced in the ARCA Roofing Application Standards Manual.

## II. Adhesive Applied Membrane Cap Sheets

On January 26, 2023 ARCA Warranty Ltd. approved revisions and additions to the ARCA Roofing Application Standards for adhesive applied and self-adhered membrane cap sheets.

### **MB 6.4.3.2. Adhesive Applied Membrane Cap Sheets**

#### MB 6.4.3.2.2

Adhesive applied membranes require pressure from a hard roller to achieve optimum adhesion and uniform contact of substrates to surfaces.

#### MB 6.4.3.2.3

Apply ARCA accepted adhesive for the first 125mm (5") of the end lap. Keep adhesive back approximately 25mm (1") to accommodate a hot-air welded end lap seal.

#### MB 6.4.3.2.4

Apply ARCA accepted adhesive for the first 50mm (2") of the side lap. Keep adhesive back approximately 25mm (1") to accommodate a hot-air welded side lap seal.

### **MB 6.4.3.3. Self-Adhered Membrane Cap Sheets**

#### MB 6.4.3.3.2

Self-Adhered membranes require pressure from a hard roller to achieve optimum adhesion and uniform contact of substrates to surfaces.

### **MB 7.3.3. Cap Ply Membrane Flashing**

#### MB 7.3.3.4

Adhesive applied and self-adhered cap ply membrane flashing overlapping onto granular surfaces shall be adhered with a full bed of adhesive troweled over the granule surface. Keep adhesive back from membrane edge approximately 25mm (1") to accommodate a hot-air welded lap seal. Adhesive applied membranes require pressure from a hard roller to achieve optimum adhesion and uniform contact of substrates to surfaces.

#### MB 7.3.3.7

Adhesive applied and self-adhered membrane flashing shall be carried across the top (horizontal) surface of the parapet wall and terminated along the outside edge of parapet. If the membrane "bulges" at the angle change, install round-top nails or a continuous fastening bar to prevent a void between membrane plies.

These changes will be in effect for jobs bid after March 26, 2023. Changes will be referenced in the ARCA Roofing Application Standards Manual.

### III. New Expanded Polystyrene (EPS) Insulation Manufacturer

On January 26, 2023 ARCA approved Alleguard as a Manufacturing Member, and ARCA Warranty Ltd. approved the following materials for use in the ARCA Warranty Certificate program.

Expanded Polystyrene Insulation

Envirosheet Type 1

Envirosheet Type 2

Envirosheet Type 3

Changes will be referenced in the ARCA Roofing Application Standards Manual.